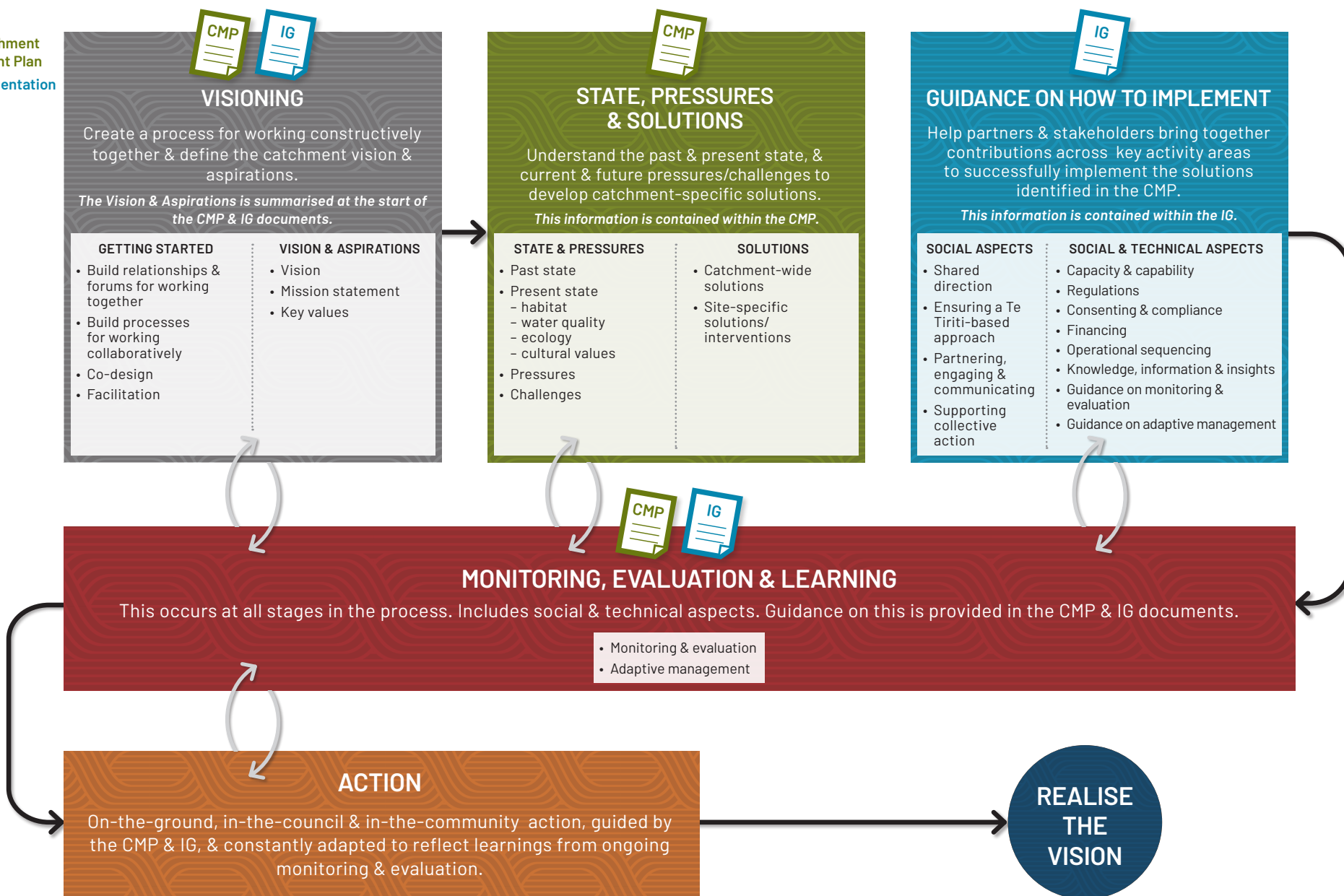


# A Process for Transforming the Lowland Waterway Network of the Ararira/LII Catchment:

## Five key stages of co-design & collective action to realise the Vision 2023

CMP = Catchment Management Plan  
IG = Implementation Guide



# Transforming the Lowland Waterway Network of the Ararira/LII Catchment: An overview of the Ararira Catchment Management Plan (CMP) 2023



## Vision & Aspirations

CMP Section 2 / pages 7-8

### Vision Statement

The life force of the Ararira catchment is enhanced by the thriving communities who live within it, & their relationship to land & water, now & in the future.

### Mission Statement

We will work together to reimagine the Ararira so that it continues to support thriving & resilient communities while enhancing the mauri of the catchment.

### Key Value Baskets

- The Mauri & ecosystem health of the lake
- Thriving communities – providing for current & future generations
- Healthy lake supports healthy people
- A prosperous land- & water-based economy is maintained



## State & Pressures

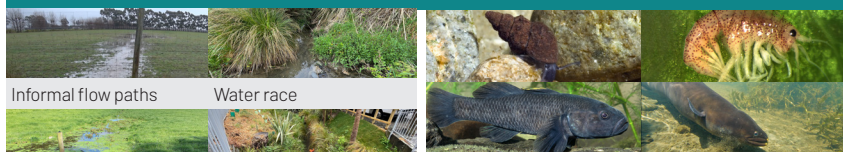
CMP Sections 3 & 4 / pages 11-49

### Past State



Podocarp forest ►►► Wetlands ►►► Drainage, farming, urban development

### Present State



Informal flow paths

Water race

Springs

Mainstem – headwaters

Mainstem – middle reaches: Mainstem – lower reaches

Drains – ephemeral

Drains – perennial

- Water quality
- Freshwater ecology
- Cultural values
- Waterway types – defined based on key features

### Pressures & Challenges



#### Pressures:

- Land use change & intensification
- Complex flows
- Climate change

#### Challenges:

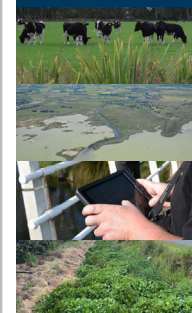
- Excessive macrophytes
- Sediment
- Lack of space
- Flooding & wet ground



## Solutions

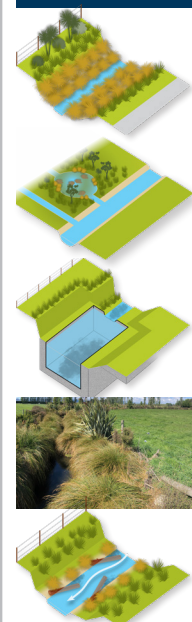
CMP Sections 5 & 6 / pages 53-90

### Catchment-scale Solutions



- Transformative practice
- Land acquisition & strategic land use change
- Smart systems' for drainage monitoring
- Changing maintenance practices

### Site-specific Solutions



#### Bank reshaping with riparian planting:

- Two stage channel with planting – large scale
- Two stage channel with planting for low cover – small scale
- Two-stage channel with grass – small scale

#### Wetlands:

- Large scale
- Small scale

#### Sediment traps:

- Inline – small scale
- Event-based inline – small scale
- Large scale

#### Planting & protective interventions:

- Other riparian planting – for mainstem habitat
- Protecting springheads
- Fencing waterways

#### Instream habitat:

- Log vanes – large scale & small scale
- Cobble clusters

# 12 Key Areas to Support Effective Catchment Management:

## Key areas underpinning effective implementation of the Catchment Management Plan (CMP) in the Ararira Catchment 2023

