

Transforming Lowland Waterway Network of the Ararira/LII Catchment 2023



Overview of available project documentation, see online by **clicking here**, or using the QR code.



Catchment Management Plan (CMP):
(106 pages)



Implementation Guide (IG):
(84 pages)



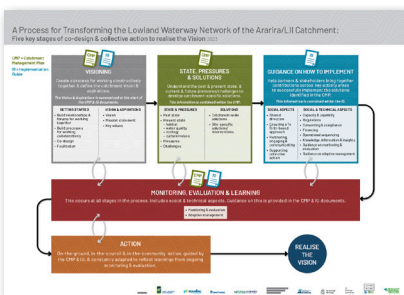
CMP/IG Summary:
Summary of CMP & IG documents. (28 pages)



Powerpoint Presentation:
Summarises main topics of the CMP & IG documents. (51 pages)



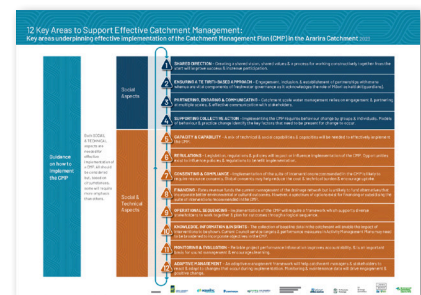
Project Briefing Flyer:
Introduction to CMP & IG documents. (2 pages)



Process Diagram:
Diagrammatic view of all the main steps needed to transform a waterway network. Includes the CMP and IG processes but also steps that occur before and after that.
(1 page – available in A4/A3/A1 versions)



CMP Diagram:
Summarises the sections of the CMP document – the content specific to the Ararira catchment.
(1 page – available in A4/A3/A1 versions)



IG Diagram:
Summarises sections of the IG document. Content is generic about what should be covered in any IG. Used to identify technical vs social aspects.
(1 page – available in A4/A3/A1 versions)