

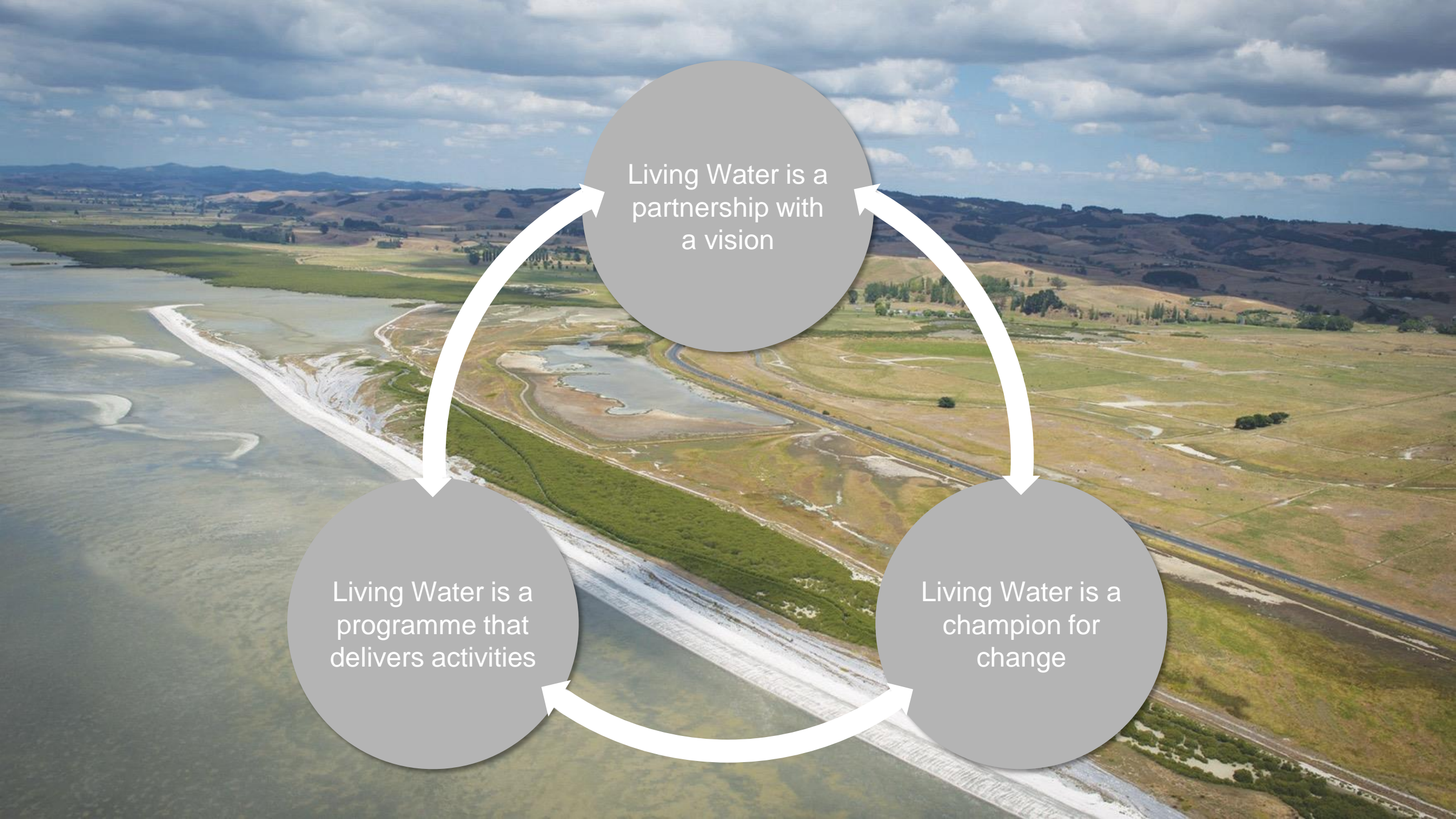
ARARIRA-LII STRATEGIC PLAN

LIVING

WATER

Dairy and freshwater thriving together



An aerial photograph of a water treatment facility, likely a wastewater treatment plant, featuring large circular tanks and a long, straight concrete channel. The facility is situated in a rural landscape with rolling hills and fields under a cloudy sky. Overlaid on the image is a circular diagram with three grey circles connected by white arrows in a clockwise cycle. The top circle contains the text 'Living Water is a partnership with a vision'. The bottom-left circle contains the text 'Living Water is a programme that delivers activities'. The bottom-right circle contains the text 'Living Water is a champion for change'.

Living Water is a
partnership with
a vision

Living Water is a
programme that
delivers activities

Living Water is a
champion for
change

OUR VISION

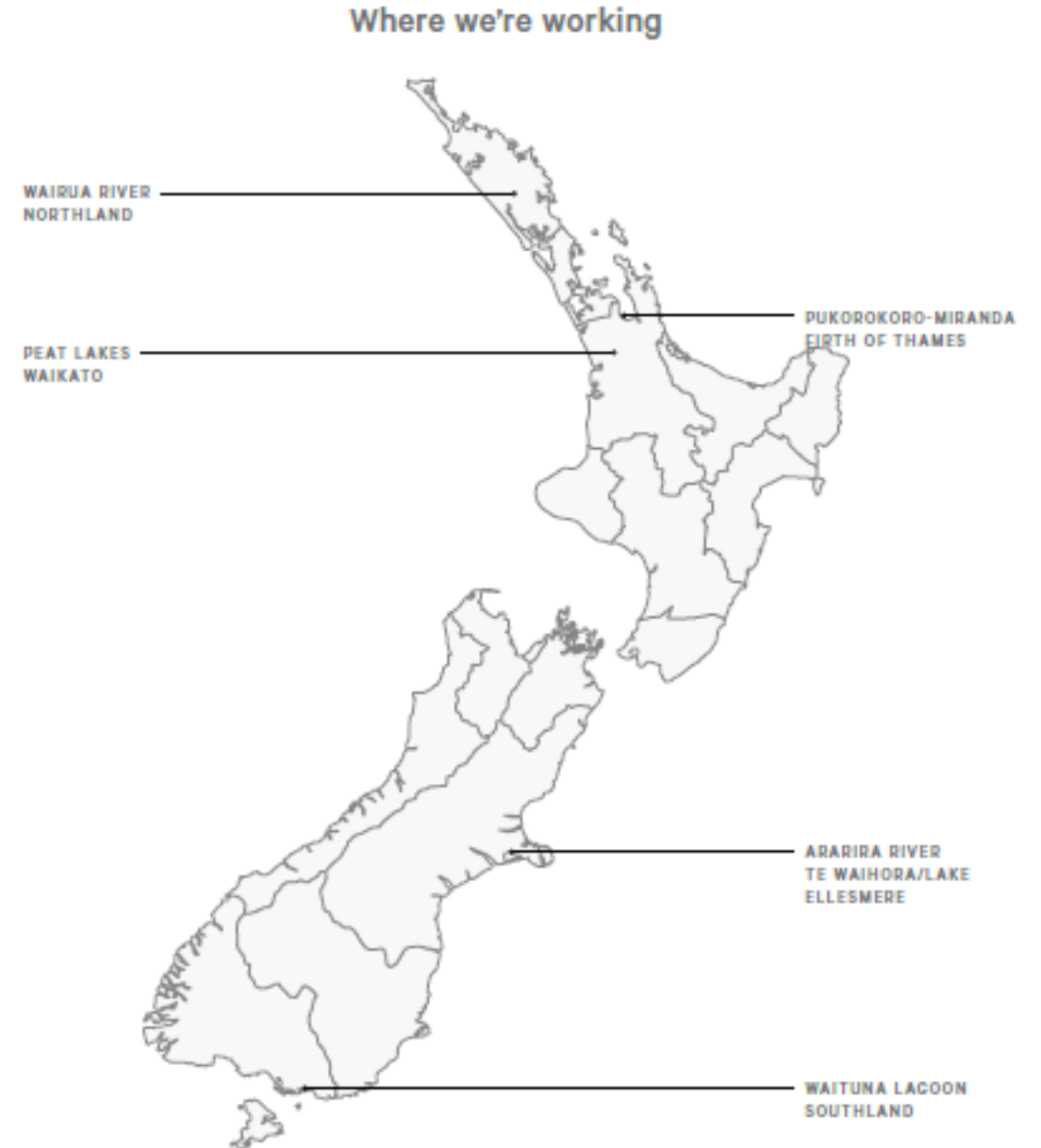
A sustainable dairy industry is part of healthy
functioning ecosystems that enrich
the lives of all New Zealanders

OUR INVESTMENT

We are working in five sites across New Zealand, starting with \$20m over 10 years

DOC and Fonterra staff work together, side by side on the ground

We actively seek collaboration with other partners to bring together skills, ideas, and additional funding



OUR PURPOSE

To implement game-changing and scalable solutions that demonstrate sustainable dairying in healthy freshwater ecosystems



OUR SCOPE

We are focused on the interface between dairy farming practice and freshwater ecosystems.

We prioritise on-farm actions, improving freshwater quality, and reconnecting lowland habitats via freshwater corridors.

Our work needs to contribute towards advancing sustainable farming systems in New Zealand's agricultural sector.

OUR LONG TERM OUTCOMES

Environmental

healthy resilient lowland freshwater ecosystems

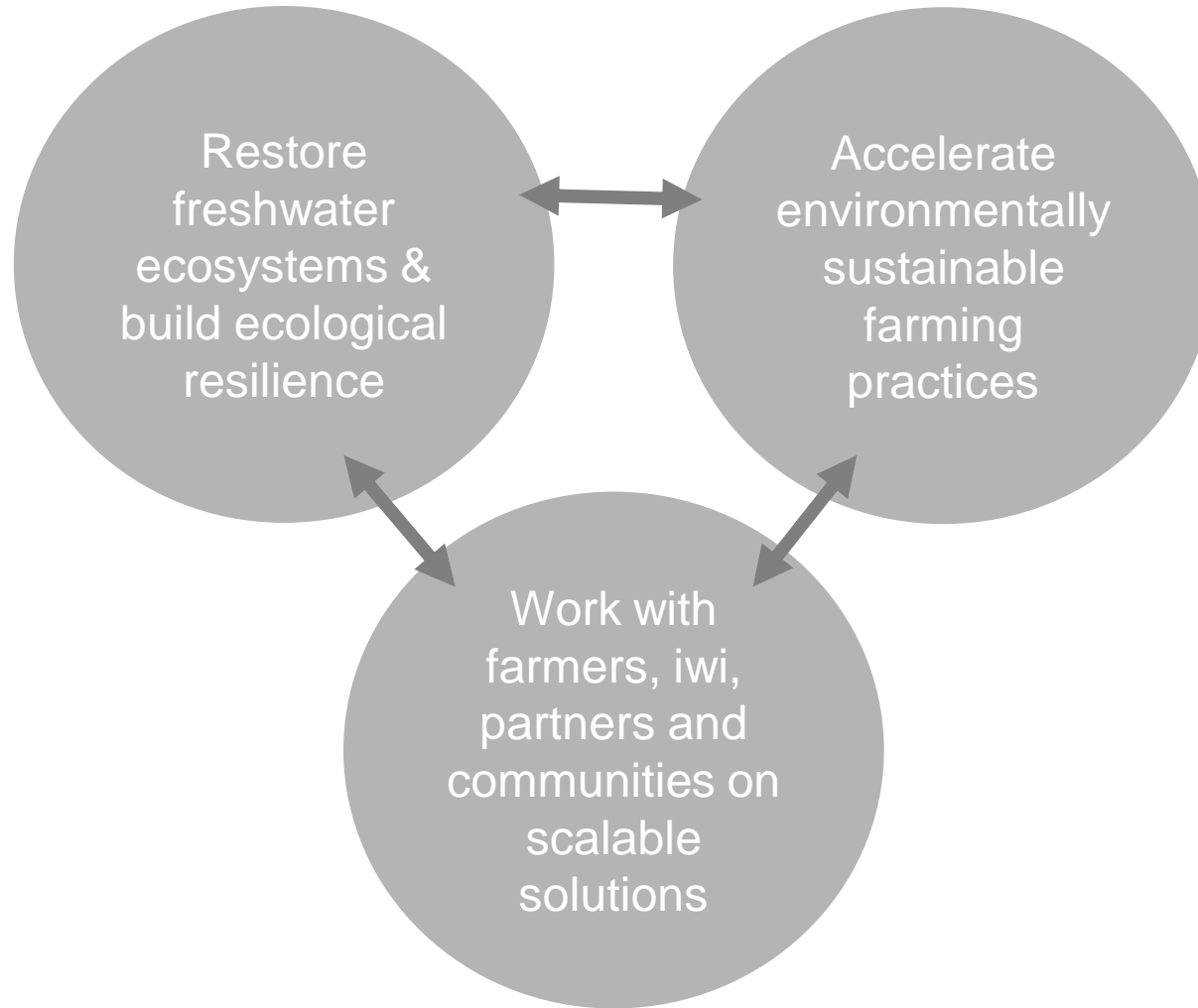
Economic

profitable responsible dairying

Social and Cultural

a shared understanding of the interdependence of
agriculture, economy and environment

OUR STRATEGIC OBJECTIVES & APPROACH



GUIDING PRINCIPLES

Collaborate and Partner | Integrate Mātauranga Māori | Create Connections
Above and Beyond Regulation | Measurable and Repeatable | Learn and Share

OUR IMPLEMENTATION CONTEXT – AGRICULTURE IN NEW ZEALAND

ENHANCED CURRENT STATE

Individual sites (public & private)
Good management practice
People taking action to meet current or
future regulatory limits within current
economic tolerances

TRANSITIONAL STATE

Sites as part of a catchment
Prioritised actions based on ‘best bang for
buck’ and contribution to catchment
outcomes
Communities working together towards
voluntary targets / aspirations

UNKNOWN FUTURE STATE

Diversification / disruption
Socio-ecological resilience
Climate change adaptation
NZ’s opportunity in changing global
markets

Living Water is adding ecological
considerations into FEPs and funds
acceleration & restoration projects

Living Water is ground-truthing the theory,
freshwater-farming demonstrations at
multi-farm scale, contribute to integrated
catchment projects, calculate costs of
implementation

Living Water is contributing to
conversations led by others and
providing evidence / learnings

LIVING WATER AIMS TO BUILD A RESILIENT LANDSCAPE READY FOR ANY FUTURE PRODUCTIVE LAND USE

OUR IMPLEMENTATION FRAMEWORK

Build it

show people what a Living Water farm could look like

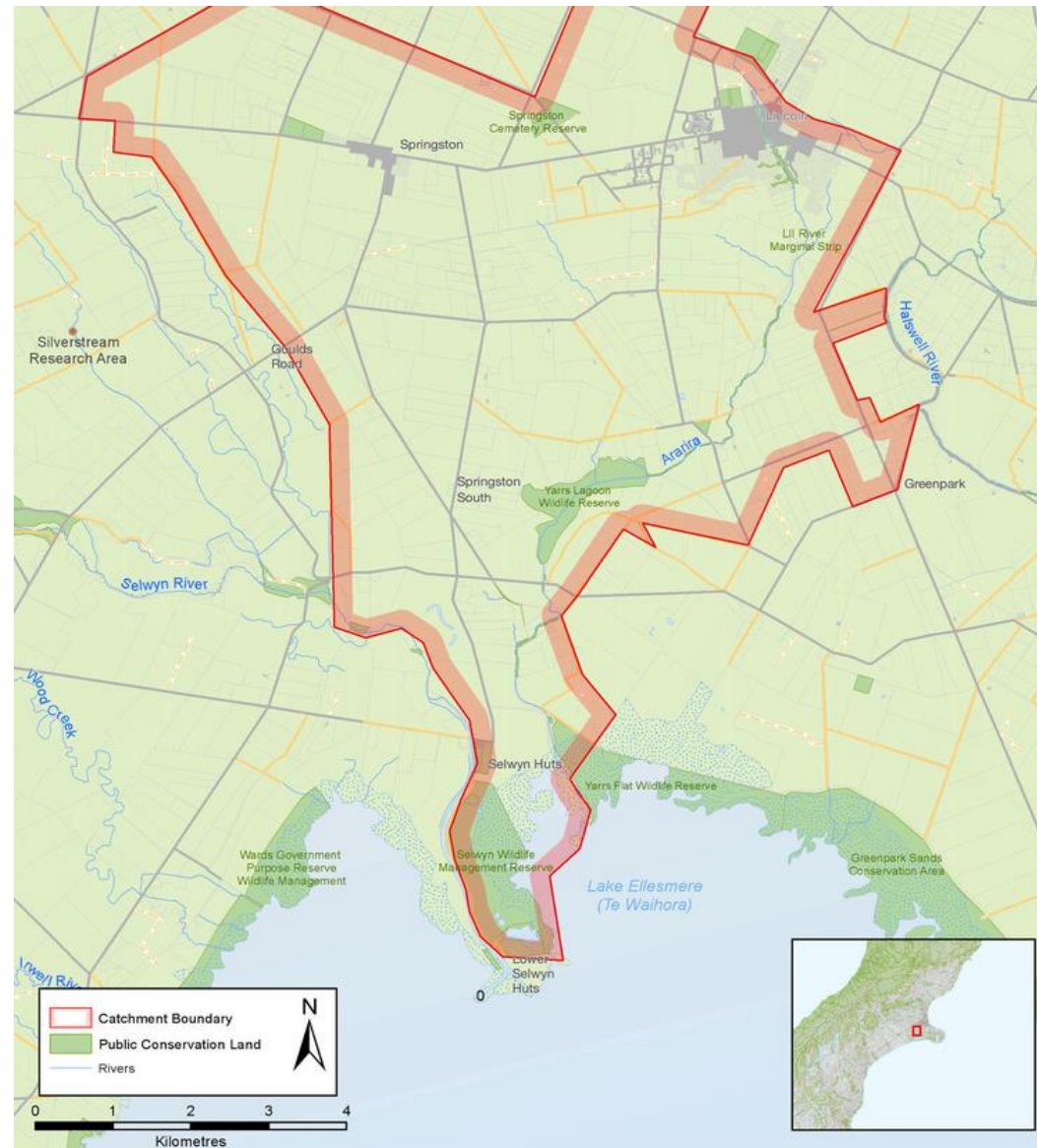
Operationalise it

what capability, capacity and support does the farming sector and communities need to get there

Cost it

what is the cost of conversion (farm, catchment and national scales) so farmers and communities can plan for future investment

ARARIRA-LII CATCHMENT





ARARIRA/LII: THE MAIN ENVIRONMENTAL PROBLEMS

Significant loss of wetland and freshwater ecosystems and lowland habitat

Poor water quality, including high levels of suspended sediment, nutrients (P) and faecal coliforms

The Ararira/LII River is highly modified with low ecological values, and is primarily managed for drainage to reduce the threat of flooding for landowners in the catchment.

ARARIRA-LII: SOCIAL AND INSTITUTIONAL CONTEXT

Environmental limits

Farmers have nitrogen targets to achieve under regional regulations, so are motivated to find solutions

Urban intensification

Local towns in the Ararira-LII catchment (Lincoln and Springston) are rapidly urbanising and increasing public focus on agricultural impacts on freshwater

Water management

Selwyn District Council (SDC) is the only district council in Canterbury that manages a drainage scheme, all others are managed by Environment Canterbury. SDC utilises local drainage committees to oversee waterway management, with the committee made up of representatives of landowners who pay a drainage levy

SELWYN WAIHORA ASPIRATION

To restore the mauri of Te Waihora while maintaining the prosperous land based economy and thriving community



Selwyn Waihora Zone Implementation Programme



ZONE IMPLEMENTATION PLAN OUTCOMES THAT LIVING WATER ACTIVITIES WILL CONTRIBUTE TOWARDS

Farming at Good Management Practice (GMP) or better

Catchment is managed in a way that integrates Ngai Tahu values across all outcomes and how these will be achieved

Enhanced indigenous biodiversity and ecosystem health

Raise community awareness of freshwater management goals and how these will be achieved

INTEGRATION OF LIVING WATER INTO TE WAIHORA IMPROVEMENT WORK PROGRAMMES

KEY ORGANISATIONS WORKING TO IMPROVE TE WAIHORA/LAKE ELLESMERE

Te Waihora Ellesmere Trust:

community organisation dedicated to the improvement of the health and biodiversity of Te Waihora/Lake Ellesmere and its catchment

ECan:

Freshwater manager and administrator of Zone Implementation Plans

SDC:

Drainage manager, focused on flood protection

Fish & Game:

Manages, maintains and enhances sports fish and game birds and their habitats

Te Taumutu Runanga:

Tribal council for Taumutu and the waters of Waihora

LIVING WATER ROLE:

Liaise
Support community aspirations
Enable their involvement in LW planning and co-design
Enable community-led delivery where appropriate

LIVING WATER ROLE:

Liaise and share learnings
Align projects with Zone Implementation Plan
Support ECan's long term planning
Identify partnering opportunities

LIVING WATER ROLE:

Liaise and share
Enable their involvement in LW planning & co-design
Identify partnering opportunities

LIVING WATER ROLE:

Liaise and share learnings
Partner on Snake Creek restoration project

LIVING WATER'S FOCUS IN ARARIRA/LII

Transforming the drain and water network into a healthy freshwater ecosystem in a productive agricultural landscape.



THEORY OF CHANGE / CHANGE JOURNEY (under development)

OUR TARGETS (under development)

50% increase in on-farm freshwater/fish habitat

50% sediment and phosphorous load reduction

?km waterways restored

100% Fonterra farms engaged

100% landowners engaged

IMPLEMENTATION

ACTIVITIES / PROJECTS	RESTORE Freshwater Ecosystems	ACCELERATE Sustainable Farming	PARTNER With Others	GAME CHANGER	SCALABLE
On-Farm Drain Transformation and Farm Impact Reduction Project for all Fonterra farms (9) using an innovative GMP/Targets alignment approach	X	X	X	X	X
Yarrs Lagoon Restoration Project in partnership with Selwyn District Council	X		X		
Yarrs Flat Restoration Project in partnership with the Department of Conservation	X		X		
Snake Creek Restoration Project in partnership with Fish and Game NZ	X	X	X		X
Catchment-Wide Water Network (springs, wetlands, drains, waterways) Reconnection and Enhancement Programme	X	X	X	X	X

OUR ROADMAP

- Biodiversity assessment on-farm pilot project
- Silverstream pilot project (with UC-CAREX)
- Restoration plan, planting and weed control at Yarrs Flat
- Supporting biodiversity capacity within SDC and baseline assessment for Yarrs Lagoon
- Supporting community activities (Bioblitz, WET)

- Plan and design on-farm drain transformation and farm impact reduction project
- Scope catchment-wide water network reconnection and enhancement programme with strategic partners
- Support SDC to develop reserve management plan for Yarrs Lagoon
- Support DOC to confirm Yarrs Flat restoration options as part of wider catchment programme

- Deliver on-farm drain transformation and farm impact reduction project
- Develop and deliver catchment-wide water network reconnection and enhancement programme
- Yarrs Flat and Yarrs lagoon improvements implemented
- Learnings shared and being taken up by ECan, SDC and other land managers in the catchment

PHASE 1
Years 1-3

PHASE 2
Years 4-5

PHASE 3
Years 6-10

OUR INVESTMENT

ARARIRA-LII CATCHMENT

‘ENHANCED’ CURRENT STATE

- Farm biodiversity projects
- Support SDC to restore Yarrs Lagoon
- Support DOC to restore Yarrs Flat
 - Silverstream pilot project
- Support Snake Creek restoration project

TRANSITIONAL STATE

- On-farm drain transformation and farm impact reduction project
- Catchment-wide water network reconnection and enhancement programme

‘UNKNOWN’ FUTURE STATE

- Champion an **integrated** land and water management work programme to improve the health of Te Waihora/Lake Ellesmere and provide certainty to farmers

RESOURCES

FY14-17: \$825,000
FY18-23: \$200,000

RESOURCES

FY14-17: N/A
FY18-23: \$1,800,000

RESOURCES

FY14-17: N/A
FY18-23: Staff Time

LIVING WATER



Department of
Conservation
Te Papa Atawhai